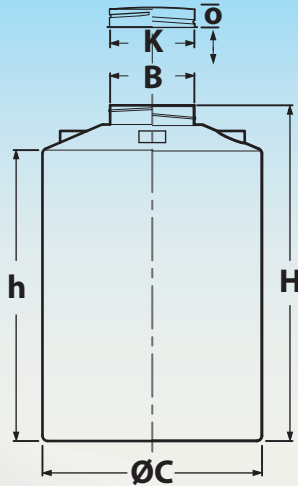
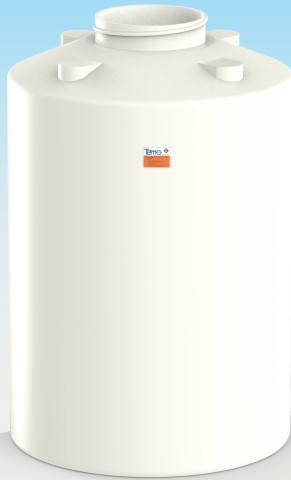


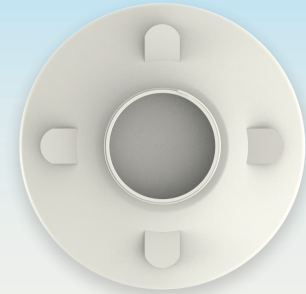
CEN-A



TIS 1379-2551



Top View



Part Number	Tank						Lid				Approx. Total Weight (kg)
	Capacity (Litre)	Approx. Dimension (mm)					Part Number	Approx. Dimension (mm)			
		B	C	H	h	Thk.		K	O	Thk.	
CEN1K0A-M141	1,000	395	1,030	1,575	1,365	5.0	CT0395-M1X8	395	90	3.0	30.70
CEN1K0A-M144						5.5					33.70
CEN1K0A-M156						7.5					45.70
CEN1K0A-M168						9.5					57.70
CEN1K5A-M155	1,500	395	1,300	1,530	1,280	5.5	CT0395-M1X8	395	90	3.0	30.70
CEN1K5A-M159						6.0					33.70
CEN1K5A-M167						7.0					45.70
CEN1K5A-M180						10.0					57.70
CEN2K0A-M168	2,000	395	1,300	1,900	1,650	6.0	CT0395-M1X8	395	90	3.0	57.70
CEN2K0A-M178						7.0					67.70
CEN2K0A-M188						8.0					77.70
CEN2K0A-M107						10.0					96.70
CEN2K5A-M174	2,500	395	1,300	2,150	1,900	6.0	CT0395-M1X8	395	90	3.0	63.70
CEN2K5A-M184						7.0					73.70
CEN2K5A-M195						8.0					84.70
CEN2K5A-M211						10.0					100.70
CEN3K0A-M180	3,000	395	1,300	2,650	2,400	6.0	CT0395-M1X8	395	90	3.0	79.00
CEN3K0A-M103						7.0					92.00
CEN3K0A-M216						8.0					105.00
CEN3K0A-M242						10.0					131.00
CEN4K0A-M231	4,000	500	1,600	2,450	2,150	8.0	CT0500-M2X9	500	150	3.0	121.70
CEN4K0A-M261						10.0					151.70
CEN4K0A-M271						11.0					161.70
CEN4K0A-M201						13.0					191.70
CEN4K0A-M331						15.0					221.70
CEN6K0A-M281	6,000	500	1,850	2,830	2,410	8.0	CT0500-M2X9	500	150	3.0	171.70
CEN6K0A-M321						11.0					211.70
CEN6K0A-M361						13.0					251.70
CEN6K0A-M301						15.0					291.70
CEN10K0A-M411	10,000	500	2,100	3,680	3,250	11.0	CT0500-M2X9	500	150	3.0	301.70
CEN10K0A-M461						13.0					351.70
CEN10K0A-M511						15.0					401.70
CEN10K0A-M571						17.0					461.70
CEN10K0A-M501						18.0					491.70
CEN15K0A-M501	15,000	500	2,500	3,680	3,300	14.0	CT0500-M2X9	500	150	3.0	491.70
CEN15K0A-M671						16.0					561.70
CEN15K0A-M741						18.0					631.70
CEN15K0A-M811						20.0					701.70

NOTE: 1. Prices are exclusive of 7% VAT and subject to change without prior notice.
2. Specifications may change without prior notice.